

Knives and Tools  
for the Tire Industry.



# Precision and Perfection: For Optimal Cutting Performance, Surface Consistency and Longevity.

**The foundation of our products and cutting solutions is our knowledge of “cutting” as well as our in-depth understanding of the requirements of various sectors.**

The TKM Group produces a variety of high-quality cutting tools for the tire industry. Our extensive range of products, from steel cord shear blades to extruder knives, supports all manufacturing processes for semi-finished products. Our knives and tools

enable precision assembly of the various tire components with respect to dimensions like diameter, tread width and wall thickness, as required by the end product.

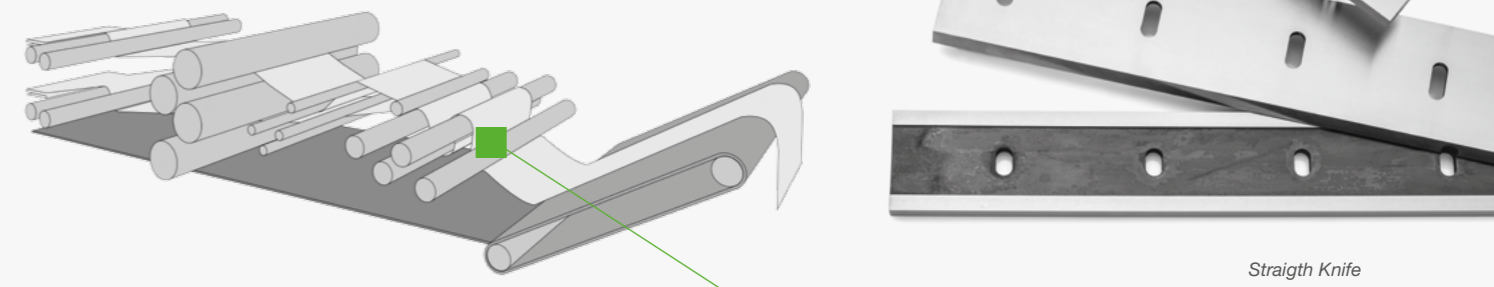
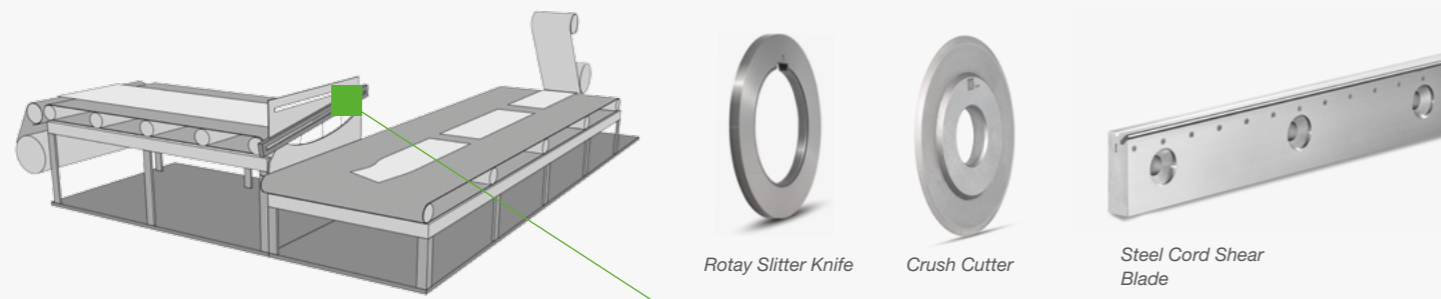
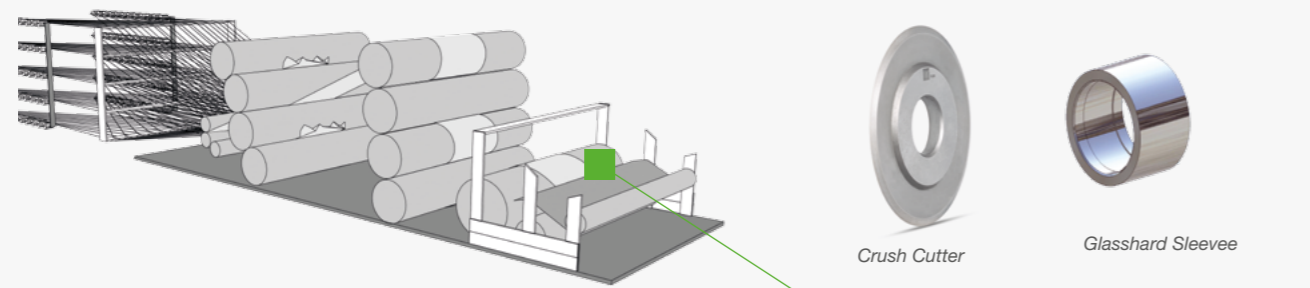
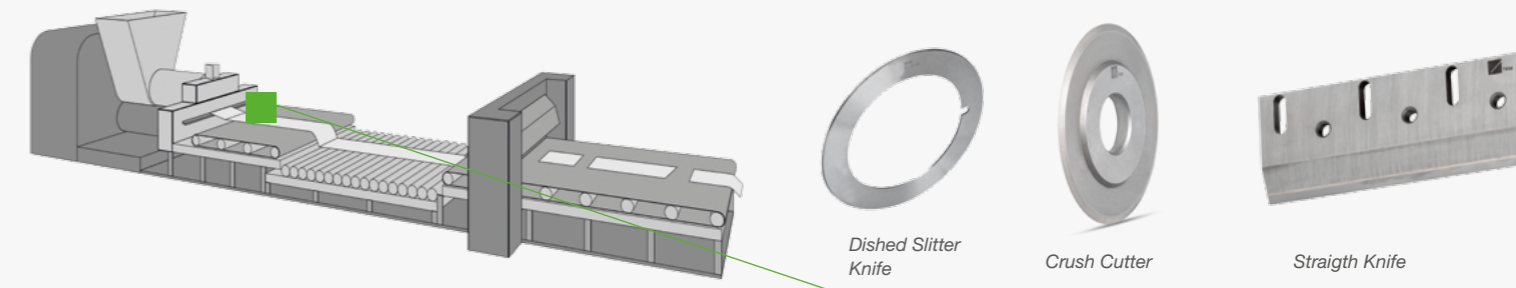
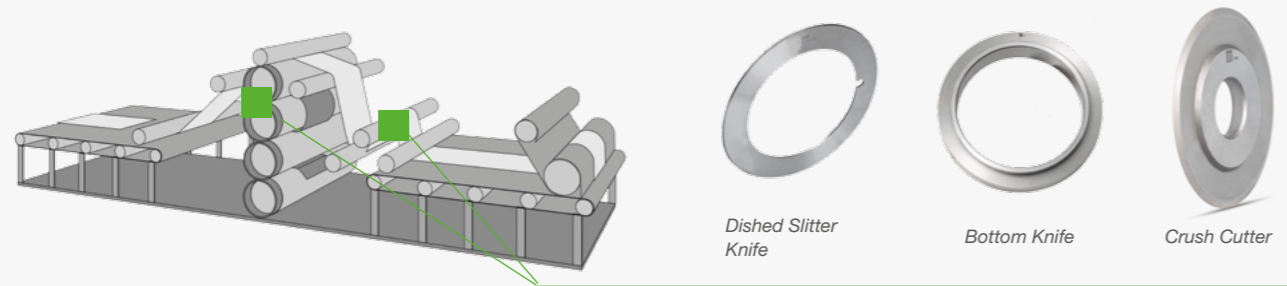
Thanks to uncompromising quality management – from the procurement of raw materials to delivery – we can guarantee that absolutely no tolerance deviations will impair the performance of the tool.

**TKM, The Knife Manufacturers.**

## Contents

Knives and Tools for the Tire Industry	4	TKM Service	22
■ Mixing Chamber	6	Quality	26
■ Steel Cord Shear Blades	8	TKM Worldwide	28
■ Rotary Slitter Knives	9		
■ Tire Component Manufacturing	10		
■ Inspection	20		

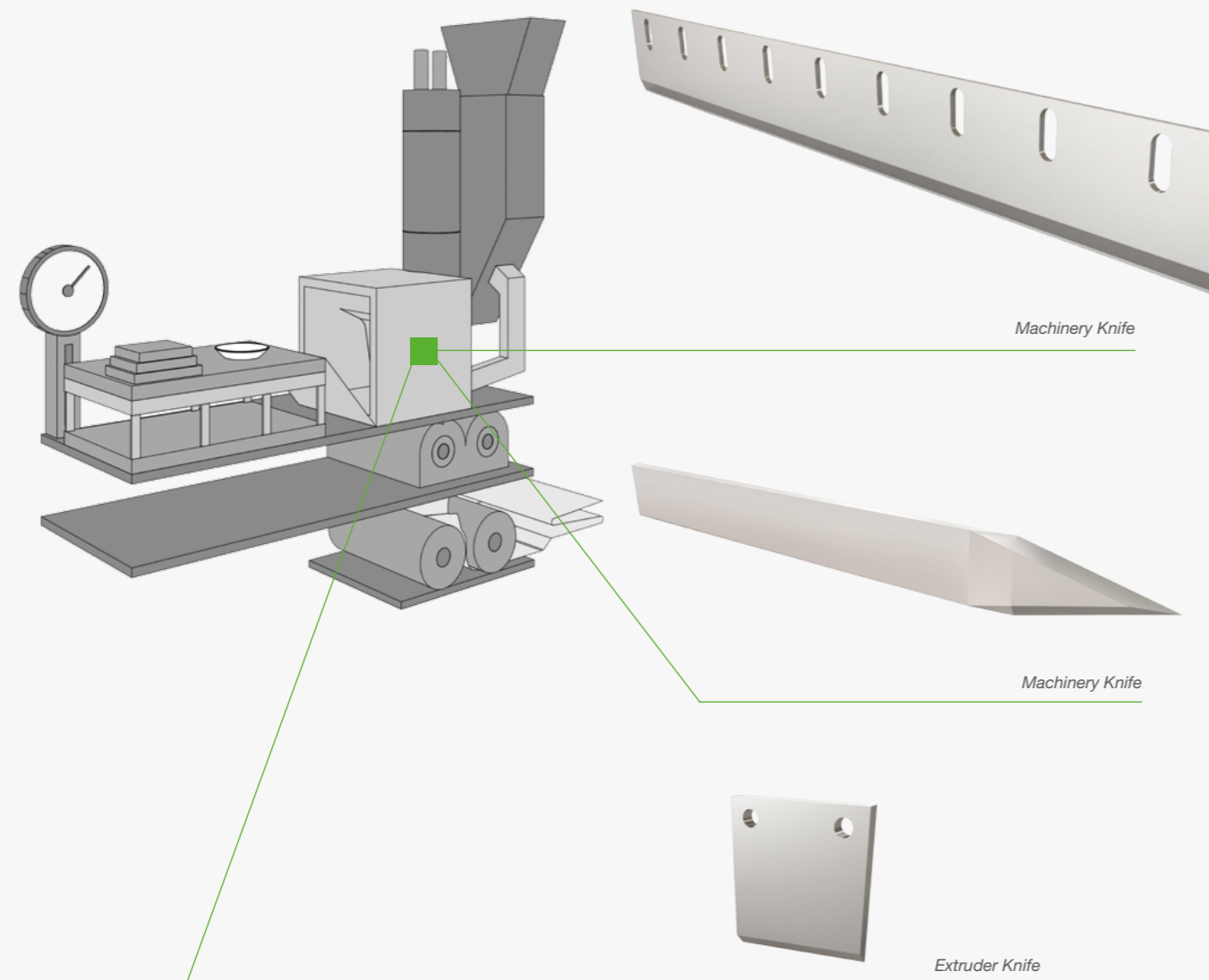
# Knives and Tools for the Tire Industry



Carefully selected steel grades form the basis of TKM knives and systems for the tire industry. From tough medium-alloy tool steel through durable, high-percentage chromium steel to powder metallurgical high-speed steels and tungsten carbide. All raw material possibilities are utilized to the full.

Our products meet the highest international requirements for dimensional tolerance and service life. Heat treatment is carried out in our own computer-controlled hardening shop, to ensure process repeatability and the preservation of desired parameters.

## Mixing Chamber



## Mixing Chamber

Item no.	Dimensions	Drawing	Designation
436266	20 x 200 x 2	0.315.000.275	Machinery Knife
414764	40 x 257 x 2	0.260.000.048	Machinery Knife
525168	89 x 101.5 x 9.45	0.315.000.747	Cut Off Knife
437335	1000 x 97 x 12	0.315.000.310	Machinery Knife
495407	1450 x 95 x 10	0.364.002.939	Machinery Knife
495411	1500 x 60 x 20	0.364.002.940	Machinery Knife
436157	1073 x 114 x 6	0.315.000.267	Machinery Knife
436158	1000 x 92 x 10	0.315.000.251	Machinery Knife
436159	1000 x 55 x 17.5	0.315.000.252	Machinery Knife
417703	1535 x 150 x 4	0.315.000.098	Machinery Knife
436270	85 x 65 x 14	0.315.000.273	Machinery Knife
587420	1000 x 100 x 11	0.315.000.831	Berstorff machine knife
464443	170 x 138 x 6	0.315.000.460	Machinery Knife
413726	660 x 100 x 13	0.315.000.423	Machinery Knife
426411	600 x 200 x 10	0.315.000.156	Machinery Knife
510835	700 x 100 x 14	0.315.000.708	Machinery Knife

The listed blades and knives of course represent only some of our production possibilities.

We are specialized to produce knives geared to your individual requirements.

We produce anything from standard tool steels to HSS and PM steels, as well as solid carbide materials and carbide tipped versions.  
Different types of coating are also available on request.

## Steel Cord Shear Blades

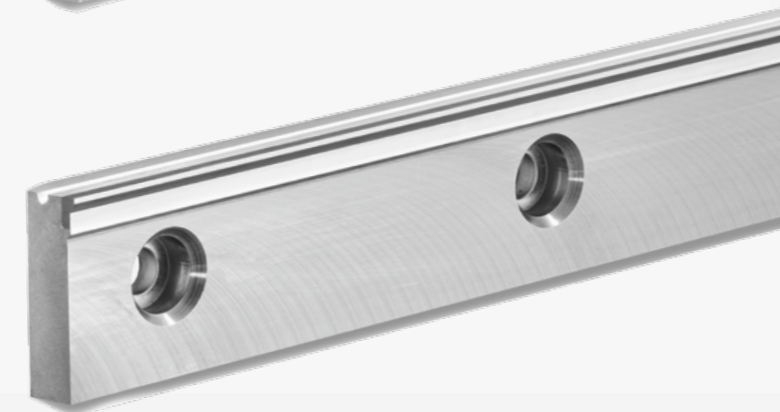
### Steel Cord Shear Blades - 1 Generation

- Solid steel
- Suitable for all cutting systems



### Steel Cord Shear Blades - 2 Generation

- Brazed carbide
- Suitable for all cutting systems



### Steel Cord Shear Blades - 3 Generation

- Suitable for all cutting systems



Made in Austria  
- Patent pending -

### Steel Cord Shear Blades - 3 Generation

The steel cord shear blades of the 3rd generation are a wholly new development with an interchangeable blade system that guarantees a permanently constant blade thickness. In addition, the blade system can be individually adjusted for any cutting application.

- Accustomed cutting results with significantly higher efficiency
- Blades from different steel grades, including carbide
- Shorter servicing times due to constant blade thickness
- Suitable and adjustable for any cutting system
- Low-cost replacement in case of breaks in the cutting edge

## Rotary Slitter Knives

We are constantly working on the development of new cutting materials in order to perfect the wear resistance and toughness for specific tasks.

For the tire industry we especially recommend our SK39 and carbide grades.



### Surface Characteristics

We produce rotary slitter knives with different surface characteristics, depending on the cutting application.

- Polished
- Finely ground, depending on the steel grade of the rotary slitters

## Tire Component Manufacturing

Item	Dimensions	Drawing	Designation	System
414315	508 x 9.4 x 69.9	0.261.000.211	Circular knife	Alpha Spadone
430254	506 x 6.5 x 69.8	0.316.000.025	Circular knife	Alpha Spadone
439813	508 x 9.4 x 69.9	0.261.000.225	Circular knife	Alpha Spadone
430301	100 x 9.6 x 9.65	0.361.000.040	Rotary slitter knife	Alpha Spadone
434726	146.37 x 8.5 x 63.5	0.483.000.122	Rotary slitter knife	Alpha Spadone
434826	2384.4 x 88.9 x 9.53	0.364.002.387	Shear blade	Alpha Spadone
434828	2349.5 x 88.9 x 9.53	0.364.002.388	Shear blade	Alpha Spadone
463567	3162.3 x 127 x 12.7	0.364.002.577	Shear blade	Alpha Spadone
463568	3111.5 x 101.6 x	0.364.002.575	Shear blade	Alpha Spadone
463569	238 x 50.8 x 12.7	0.364.002.576	Shear blade	Alpha Spadone
475355	2353 x 89.3 x 9.52	0.364.002.688	Shear blade	Alpha Spadone

Item	Dimensions	Drawing	Designation	System
436153	150 x 105 x 4	0.315.000.284	Machinery Knife	Apex
436154	150 x 85 x 4	0.315.000.285	Machinery Knife	Apex
470.027	580 x 98 x 12	0.315.000.530	Machinery Knife	Apex
470282	160 x 160 x 10	0.315.000.531	Machinery Knife	Apex
470283	160 x 160 x 5	0.315.000.532	Machinery Knife	Apex
571883	110 x 130 x 4	0.315.000.812	Machinery Knife	Apex
593008	600 x 98 x 12	0.315.000.839	Machinery Knife	Apex

Item	Dimensions	Drawing	Designation	System
416721	410 x 5 x 50	0.314.000.169	Circular knife	Berstorff

Item	Dimensions	Drawing	Designation	System
425274	130 x 1.5 x 100	0.314.000.054	Dished Slitter Knife	Calemard / GFA
425275	105 x 10 x 80	0.314.000.055	Bottom Knife	Calemard / GFA
431250	140 x 1.5 x 100	0.314.000.076	Dished Slitter Knife	Calemard
436251	90 x 1.2 x 60	0.314.000.132	Dished Slitter Knife	Calemard
469631	112 x 10 x 80	0.316.000.038	Knife Holder	Calemard/GFA

Item	Dimensions	Drawing	Designation	System
436297	100 x 14 x 0.8	0.315.000.270	Blade	CM
436296	100 x 14 x 0.8	0.315.000.269	Blade	CM
470026	100 x 16 x 0.8	0.315.000.529	Blade	CM
491829	100 x 17.9 x 0.5	0.315.000.652	Blade	CM
418845	2590 x 80 x 2	0.315.000.077	Cutting bar	CM
422568	1140 x 40 x 1.5	0.313.000.118	Cutting bar	CM
422569	945 x 40 x 1.5	0.315.000.119	Cutting bar	CM
433734	920 x 40 x 1.5	0.315.000.392	Cutting bar	CM
436140	365 x 40 x 1.5	0.315.000.240	Cutting bar	CM
436143	465 x 40 x 1.5	0.315.000.243	Cutting bar	CM
436144	1140 x 40 x 1.5	0.315.000.244	Cutting bar	CM
436145	945 x 40 x 1.5	0.315.000.245	Cutting bar	CM
436149	690 x 40 x 1.5	0.315.000.246	Cutting bar	CM
436152	1160 x 40 x 1.5	0.315.000.248	Cutting bar	CM
464498	1195 x 50 x 1.5	0.315.000.459	Cutting bar	CM
477163	1440 x 40 x 1.5	0.315.000.570	Cutting bar	CM

The listed blades and knives of course represent only some of our production possibilities.

We are specialized to produce knives geared to your individual requirements.

We produce anything from standard tool steels to HSS and PM steels, as well as solid carbide materials and carbide tipped versions.

Different types of coating are also available on request.

## Tire Component Manufacturing

Item	Dimensions	Drawing	Designation	System
490032	1294 x 50 x 1.5	0.315.000.644	Cutting bar	CM
513475	2245 x 60 x 1.5	0.315.000.713	Cutting bar	CM
538683	1515 x 60 x 1.5	0.315.000.768	Cutting bar	CM
574559	1545 x 60 x 1.5	0.315.000.812	Cutting bar	CM
606045	920 x 40 x 1.5	0.315.000.881	Cutting bar	CM
411285	1660 x 110 x 14	0.364.002.083	Shear Blade	CM
270.405	1740 x 84 x 15	0.364.002.083	Shear Blade	CM
488983	60 x 30 x 10	0.315.000.756	Shear Blade	CM
489463	60 x 30 x 10	0.315.000.637	Guide	CM
436191	175 x 2.4 x 31.8	0.314.000.107	Circular knife	CM
464117	175 x 2.4 x 31.8	0.314.000.250	Circular knife	CM
522891	175 x 2.4 x 31.8	0.314.000.417	Circular knife	CM

Item	Dimensions	Drawing	Designation	System
436298	130 x 1.5 x 80	0.314.000.113	Hollow circular knife	Fischer
436299	77 x 10 x 60	0.404.000.512	Groove knife	Fischer
525015	177.8 x 12.7 x	0.483.000.280	Rotary slitter knife	Fischer
550296	178 x 7.0 x 143	0.483.000.307	Rotary slitter knife	Fischer
436.196	20 x 46 x 5	0.315.000.282	Edge trimmer	Fischer
436.197	20 x 46 x 5	0.315.000.283	Edge trimmer	Fischer
440185	70.5 x 18 x 2	0.315.000.400	Edge trimmer	Fischer
597865	70 x 17.5 x 2	0.315.000.848	Edge trimmer	Fischer

The listed blades and knives of course represent only some of our production possibilities.

We are specialized to produce knives geared to your individual requirements.

Item	Dimensions	Drawing	Designation	System
Var. lengths	80 x 30	Coated	Shear blade, solid	Fischer
Var. lengths	80 x 24.5	Coated	Shear blade, carbide	Fischer
Var. lengths	80 x 27.5	Coated	Shear blade, carbide	Fischer

Item	Dimensions	Drawing	Designation	System
486993	5000 x 30 x 10	0.364.003.025	Shear blade	Gazuit
525112	5040 x 30 x 10	0.364.003.024	Shear blade	Gazuit
413455	400 x 16 x 300	0.361.001.380	Rotary slitter knife	Gazuit

Item	Dimensions	Drawing	Designation	System
483099	54 x 42 x 1	0.315.000.766	Blade	HF
526806	54 x 42 x 1	1.315.000.766	Blade	HF

Item	Dimensions	Drawing	Designation	System
487110	43 x 65 x 33	0.314.000.372	Extruder Nozzle	KMW

Item	Dimensions	Drawing	Designation	System
Var. lengths	80 x 30	Coated	Shear blade, solid	Konstrukta
466789	400 x 20 x 336		Rotary slitter knives	Konstrukta

Item	Dimensions	Drawing	Designation	System
Var. lengths	80 x 30	Coated	Shear blade, solid	Mesnac

We produce anything from standard tool steels to HSS and PM steels, as well as solid carbide materials and carbide tipped versions.

Different types of coating are also available on request.

## Tire Component Manufacturing

Item	Dimensions	Drawing	Designation	System
434576	3850 x 30 x 10	0.364.002.384	Shear blade, solid	Mitsubishi

Item	Dimensions	Drawing	Designation	System
490239	112 x 30.5 x 80	0.423.091.000	Knife Holder	The materials

Item	Dimensions	Drawing	Designation	System
434723	127 x 9.53 x 3.27	0.482.000.026	Bottom Knife	Steelastic
418411	558 x 38 x 13	0.480.107.000	Shear blade, carbide	Steelastic
508752	600 x 38.2 x 13	0.315.000.703	Shear blade	Steelastic
508754	600 x 38.2 x 13	0.315.000.704	Shear blade	Steelastic
663885	673.6 x 38 x 13	0.480.1200.00	Shear blade	Steelastic

Item	Dimensions	Drawing	Designation	System
436247	22 x 100 x 2	0.315.000.279	Blade	Troester
436187	220 x 26 x 6	0.315.000.249	Machinery Knife	Troester
436188	826 x 70 x 10	0.315.000.250	Machinery Knife	Troester
436189	825 x 60 x 10	0.315.000.264	Machinery Knife	Troester
467630	160 x 150 x 7	0.315.000.601	Shear plate	Troester
467823	148 x 148 x 9	0.371.000.015	Shear plate	Troester
474062	180 x 170 x 9	0.371.000.010	Shear plate	Troester
475984	140 x 120 x 8	0.315.000.561	Shear plate	Troester
480678	120 x 110 x 3	0.315.000.584	Shear plate	Troester
485309	120 x 135 x 3	0.315.000.602	Shear plate	Troester
485311	80 x 80 x 2	0.315.000.603	Shear plate	Troester

Item	Dimensions	Drawing	Designation	System
512078	63 x 63 x 2	0.315.000.712	Shear plate	Troester
534756	120 x 110 x 5	0.315.000.765	Shear plate	Troester
551444	120 x 125 x 2.4	0.315.000.790	Shear plate	Troester
436200	175 x 2 x 50	0.314.000.130	Circular knife	Troester
439607	500 x 4 x 50	0.316.000.028	Circular knife	Troester
665083	400 x 5 x 50	1.314.000.499	Circular knife	Troester

Item	Dimensions	Drawing	Designation	System
Var. lengths	57 x 20		Shear blade, solid	VMI
Var. lengths	58.4 x 20		Shear blade, solid	VMI
Var. lengths	65 x 16		Shear blade, solid	VMI
Var. lengths	80 x 30		Shear blade, solid	VMI
436164	1086 x 99 x 141	0.315.000.266	Shear blade	VMI
436167	875 x 99 x 11	0.315.000.265	Shear blade	VMI
472538	930 x 70 x 15	0.315.000.309	Lower knife	VMI
472538	90 x 70 x 2	0.315.000.545	Machinery Knife	VMI
472539	90 x 60 x 2	0.315.000.546	Machinery Knife	VMI
480212	90 x 60 x 2	0.315.000.583	Machinery Knife	VMI
489941	90 x 60 x 2	0.315.000.637	Machinery Knife	VMI
490324	90.3 x 30 x 2	0.315.000.645	Machinery Knife	VMI
490325	90.3 x 30 x 2	0.315.000.646	Machinery Knife	VMI
584138	54 x 43 x 1.5	0.315.000.823	Machinery Knife	VMI
584359	91 x 76 x 1.5	0.315.000.825	Machinery Knife	VMI

The listed blades and knives of course represent only some of our production possibilities.

We are specialized to produce knives geared to your individual requirements.

We produce anything from standard tool steels to HSS and PM steels, as well as solid carbide materials and carbide tipped versions.

Different types of coating are also available on request.



## Tire Component Manufacturing

Item	Dimensions	Drawing	Designation	System
584360	89 x 73 x 1.5	0.315.000.826	Machine knife, left	VMI
586657	90 x 70 x 2	0.315.000.828	Machine knife	VMI
486810	38 x 75 x 9	0.315.000.624	Extruder Knife	VMI
436255	140 x 12 x 55	0.314.000.133	Crush cutting knife	VMI
436259	200 x 5 x 60	0.314.000.129	Crush cutting knife	VMI
436260	198 x 5.5 x 50	0.314.000.128	Crush cutting knife	VMI
413863	250 x 25 x 140	0.481.578.000	Rotary slitter knife	VMI

Item	Dimensions	Drawing	Designation	System
436262	38 x 76 x 7	0.315.000.277	Extruder Knife	Various
436363	15 x 15 x 6	0.315.000.276	Extruder Knife	Various
469257	55 x 75 x 8	0.480.387.000	Extruder Knife	Various
475023	70 x 45 x 9.9	0.480.441.000	Extruder Knife	Various
487144	17 x 6 x 2	0.482.000.080	Extruder Knife	Various
522371	38 x 80 x 9	0.315.000.743	Extruder Knife	Various

Item	Dimensions	Drawing	Designation	System
414125	520 x 4 x 40	0.261.000.222	Circular knife	Various
419819	350 x 5 x 50	0.314.000.496	Circular knife	Various
436160	400 x 6 x 50	0.314.000.109	Circular knife	Various

Item	Dimensions	Drawing	Designation	System
414862	1841 x 30 x 8	0.364.001.446	Shear blade	Various
606155	5300 x 30 x 12	0.364.003.473	Shear blade	Various

Item	Dimensions	Drawing	Designation	System
436289	90 x 5 x 50	0.315.000.256	Duplex	Various
436290	90 x 2 x 34.5	0.315.000.255	Duplex	Various

Item	Dimensions	Drawing	Designation	System
413913	95 x 1 x 19.05	0.314.000.235	Toothed circular knife	Various
416339	95 x 1 x 19.05	1.314.000.100	Toothed circular knife	Various
416709	95 x 0.8 x 19	0.264.000.017	Toothed circular knife	Various
436271	120 x 1.0 x 50	0.314.000.122	Toothed circular knife	Various
436275	100 x 1.2 x 19	0.314.000.120	Toothed circular knife	Various
436276	900 x 2 x 12	0.314.000.121	Toothed circular knife	Various
480265	95 x 1 x 19	0.261.000.228	Toothed circular knife	Various
464210	98 x 1 x 27	0.261.000.226	Toothed circular knife	Various
464316	98 x 1 x 30	0.263.000.016	Toothed circular knife	Various

Item	Dimensions	Drawing	Designation	System
Various	76.2 x 6.35 x 19		Crush Cutter	Various
Various	76.2 x 5.2 x 19		Crush Cutter	Various

The listed blades and knives of course represent only some of our production possibilities.

We are specialized to produce knives geared to your individual requirements.

We produce anything from standard tool steels to HSS and PM steels, as well as solid carbide materials and carbide tipped versions.

Different types of coating are also available on request.

## Tire Component Manufacturing

Item	Dimensions	Drawing	Designation	System
464444	35 x 5 x 6	0.314.000.259	Crush cutting knife	Various
525165	75 x 50 x 60	0.314.000.419	Glass-hard sleeve	Various
604977	105 x 300 x 85	0.314.000.485	Glass-hard sleeve	Various
472306	150 x 90 x 120	0.314.000.314	Glass-hard sleeve	Various
472308	110 x 100 x 80	0.314.000.315	Glass-hard sleeve	Various
460398	150 x 310 x 120	0.314.000.213	Glass-hard sleeve	Various
525165	75 x 50 x 60	0.314.000.419	Glass-hard sleeve	Various
508720	98 x 1 x 19	0.483.000.259	Double Hexagon Bias Cutter	Various
522598	98 x 1 x 27	0.483.000.278	Double Hexagon Bias Cutter	Various
528118	98 x 1 x 30	0.483.000.285	Double Hexagon Bias Cutter	Various

Item	Dimensions	Drawing	Designation	System
420231	3930 x 30 x 10	0.364.002.669	Shear blade, 2-piece	Various
435513	2270 x 30 x 10	0.364.002.401	Shear blade, 1-piece	Various
466787	3390 x 40 x 20	0.480.369.000	Shear blade	Various
468135	5100 x 30 x 10	0.315.000.509	Shear blade, 1-piece	Various
468331	2100 x 30 x 10	0.315.000.514	Shear blade, 1-piece	Various
469227	3000 x 100 x 30	0.315.000.519	Shear blade	Various
486999	3940 x 40 x 16	0.315.000.620	Shear blade	Various
525417	5500 x 30 x 10	0.364.003.028	Shear blade	Various

Item	Dimensions	Drawing	Designation	System
414417	200 x 14 x 110	0.314.000.075	Rotary slitter knife	Various

The listed blades and knives of course represent only some of our production possibilities.

We are specialized to produce knives geared to your individual requirements.

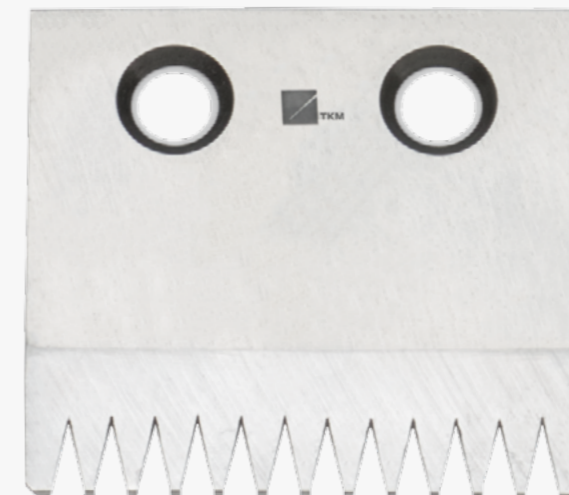
We produce anything from standard tool steels to HSS and PM steels, as well as solid carbide materials and carbide tipped versions.

Different types of coating are also available on request.



## Inspection

Item no.	Dimensions	Drawing	Designation
417032	75 x 50.6 x 2	0.315.000.577	Pin Vent Trimmer
498199	20 x 45 x 2	0.315.000.673	Pin Vent Trimmer
596255	49 x 50 x 2	0.315.000.842	Pin Vent Trimmer
596256	75 x 50 x 2	0.315.000.843	Pin Vent Trimmer
605503	260 x 70 x 4	0.317.030.002	Pin Vent Trimmer
605858	63.5 x 58.8 x 2.2	0.315.000.880	Pin Vent Trimmer
663253	261 x 70 x 4	0.315.000.902	Pin Vent Trimmer



*Deburring knife*

In manufacturing our deburring knives we place particular importance on the quality of the tooth shape and tooth depth as well as on the polished end faces, all of which significantly distinguishes the high efficiency of our deburring knives from cheaper products.

The listed blades and knives of course represent only some of our production possibilities.

We are specialized to produce knives geared to your individual requirements.

We produce anything from standard tool steels to HSS and PM steels, as well as solid carbide materials and carbide tipped versions. Different types of coating are also available on request.



For the efficient use of our tools, we always stand at the side of our customers not only as a supplier and consultant, but as a reliable partner, through all phases of their daily business.

## Collaborative Thinking and Support: Perfect consulting and support are natural for us.

### Application Consulting

Through extensive consultation with our specialists, you'll receive the support you need in selecting cutting applications and determining the necessary tools.

You'll determine the right cutting tools and cutting parameters through our close cooperation. We'll point out alternative solutions and approaches.

### Services

- Resharpener Service
- Tool Maintenance

## Resharpener Service and Tool Maintenance



### Resharpener Service

Circular and long knives lose their sharpness with time and the length of use. Dull knives have a negative effect on the cutting result and the quality of the cutting edge of the material strips. In extreme cases rounded knife edges could lead to non-compliance with the required cutting slit dimensions.

We advise you to have our specialists sharpen your cutting tools at regular intervals.

### Tool Maintenance

In order to maintain a constantly high cutting edge quality, cutting tools must be routinely overhauled.

Likewise, tools must be modified when the cutting requirements and parameters have changed.

In both of the above cases, TKM will support you with the most modern technology and experienced experts.

### Resharpener Services

- Resharpener/Polishing of Circular Knives
- Resharpener of Long Knives
- OEM Quality Level

### Maintenance Tool Services

- Reworking of Tools according to Customer Requirements
- OEM Quality Level

# Close By – Worldwide

The TKM group forms a system of cutting expertise. We create additional value – far beyond cutting.

Throughout the world, we share together the consistently pursued aim of innovation and new technologies, as is reflected by the abilities of our workers.

As a network, we utilize the potential of our local companies, which lay the foundations for our first-class service, high flexibility and personal consulting on site.

As developers and manufacturers of products and systems, we will passionately look for the optimal solution for you.



#### TKM

Telephone: +49 (0) 2191 - 969 - 0  
Remscheid, Germany

#### TKM Geringswalde

Telephone: +49 (0) 37382 - 846 - 0  
Geringswalde, Germany

#### TKM Meyer

Telephone: +49 (0) 4532 - 400 - 0  
Bargteheide, Germany

#### TKM Austria

Telephone: +43 (0) 7442 - 601 - 0  
Böhlerwerk, Austria

#### TKM Diacarb

Telephone: +31 (0) 10 - 45 - 999 - 45  
Capelle a/d IJssel, Netherlands

#### TKM France

Telephone: +33 (0) 328 - 35 - 08 - 00  
Bondues, France

#### TKM TTT Finland

Telephone: +358 (0) 201 - 240 - 288  
Akaa/Toijala, Finland

#### TKM China

Telephone: +86 (21) 6415 - 677 - 1  
Shanghai, China

#### TKM Blades Malaysia

Telephone: +60 (3) 7875 - 7669  
Selangor, Malaysia

#### TKM Singapore

Telephone: +60 (3) 7875 - 7669  
Selangor, Malaysia

#### TKM US

Telephone: +1 (859) 689 - 70 - 94  
Erlanger, United States of America

#### TKM Canada

Telephone: +1 (450) 378 - 196 - 5  
Saint-Alphonse-de-Granby,  
Canada

## TKM Headquarters, Remscheid



TKM, the internationally leading corporate group, manufactures and sells high-quality industrial knives, saws, doctor blades and precision consumable parts for industrial applications.

Our technologies, products and industrial services are applied and appreciated worldwide across many industries.

As an independent family company, we have

been setting the standards in quality and innovation, technical expertise and close cooperation for over 100 years.

Reliability, integrity and commitment are the hallmarks of our collaboration. We define our claims to excellence in terms of these fundamental values:

**Innovativeness, precision and proximity.**

### **Innovativeness:**

We find new approaches and constantly further develop products and processes, in order to produce the best performing industrial knives and tools.

### **Precision:**

Our products, services and expertise greatly improve the quality of processes, products and production at our customers' end – and thereby support their corporate development.

### **Proximity:**

Our solutions are sustainable and represent a balance between environmental measures, economic development and social commitment.

We use the potential of our local companies and create unparalleled value for our customers through our market proximity.

## TKM Geringswalde

### The Metal Expertise for Circular Products

In Geringswalde we concentrate on the development and production of tools for cutting applications in the metal and paper industries. We create customized tools and solutions for systems, machines and services over production and storage areas totaling around 6,500 m<sup>2</sup>.

On the basis of innovative ideas and consistent standards around the world, we strive for

innovative development together with our customers – down to the last detail.

The high number of trainees provides an important foundation for our corporate development. By opening perspectives to young people and promoting their talents, we afford professional and international development opportunities for their future and for TKM.



#### TKM Geringswalde

- 135 employees – 10% trainees
- 74 tool machines (70% CNC machines)
- 6.500 m<sup>2</sup> of production and storage space
- Products: 90% metal, 10% paper products
- Production batch sizes: 1 to 2.500
- Production volume: 250.000 to 300.000 precision parts per year

## TKM Austria

### The Metal Expertise for Long Products

At our Austrian production site, in Böhlerwerk, we develop and produce products for cutting applications for the metal, paper, wood, stone, rubber and plastic industries.

In the last couple of years, we have developed the Böhlerwerk site into a competent partner for the production of complex components for mechanical engineering.

Equipped with state-of-the-art machinery, we design and deliver all industrial knives and machine elements required for current applications. In this way, we can ensure the efficiency of your systems.

With our know-how and substantial in-house production depth, we'll find the right solutions for your manufacturing processes.



#### TKM Austria – Böhlerwerk

- 180 employees – 10% trainees
- 75 machine tools, including machines and systems for 5-axis milling, precision grinding and chamber, inductive and vacuum heat treatment ovens, plus an alignment shop
- 11.000 m<sup>2</sup> of production and storage space
- Main areas of production: Metal, wood, paper, machine elements, plastics/recycling
- Production batch sizes: 1 to 500





TKM  
TKM Geringswalde  
TKM Meyer  
TKM Diacarb  
TKM France  
TKM Austria  
TKM TTT Finland  
TKM US  
TKM Canada  
TKM China  
TKM Blades Malaysia  
TKM Singapore

### **Headquarters**

TKM GmbH  
In der Fleute 18  
42897 Remscheid  
Germany

Telephone: +49 (0) 2191 - 969 - 0  
[info@tkmgroup.com](mailto:info@tkmgroup.com)  
[www.tkmgroup.com](http://www.tkmgroup.com)